

Barts and The London



NHS Trust

Foundation Programme

Dr Ali Jawad

Interim Director of Medical and Dental Education

Foundation Programme Training Director

Geography and Locations

Royal London Hospital,
Whitechapel E1

- 39/47 F1s (17 general medicine, 17 surgery, renal, anaesthetics, MAU, 2 HCE) 3 x 4 months
- 26/43 F2s (11 A&E, 1 paediatric A&E, 3 MAU, 2 renal, neurology, GUM, academics) 3 x 4 month or 6 month and 2 x 3 months 4 x 3 months (one)



Geography and Locations

St Bartholomews Hospital
West Smithfield EC1A

- 7 F1s (4 cancer services, 2 endocrinology, anaesthetics)
- 5 F2s (excluding academics, cancer services, urology, anaesthetics)
- Cardiology FY1 based at London Chest Hospital



Geography and Locations

Other locations associated with the foundation programme at BLT

- Psychiatry ELMHT one F1 & one F2
- General Practice 5 F2s
- Academic GP
- Academic Public Health THPCT
- Shared A&E posts with Homerton

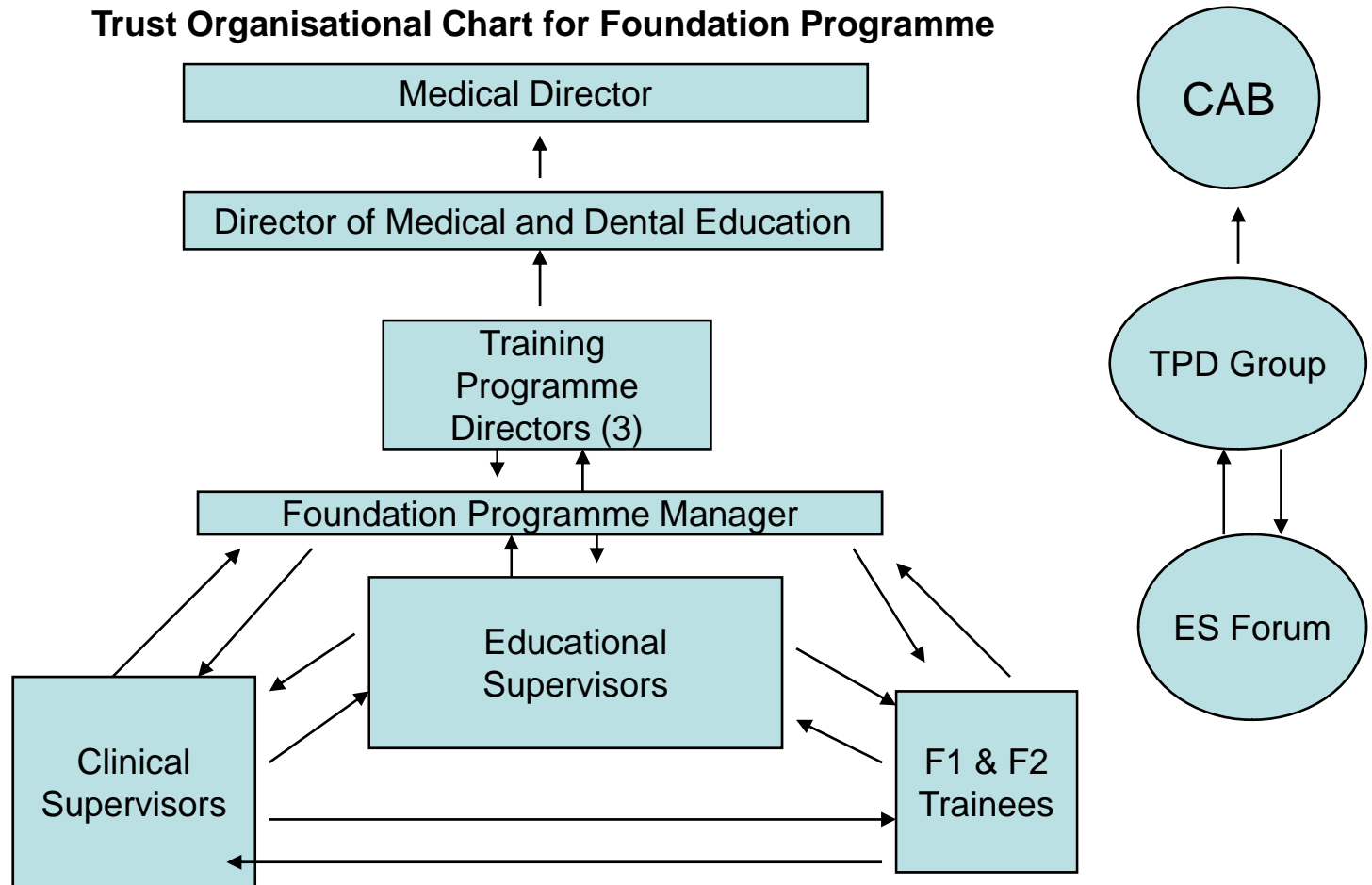
Background of Foundation Programme Delivery at BLT

- **F1 posts** – derived from existing PRHO posts in general medicine, surgery and specialties previously approved by London Deanery (with additions for foundation programme only MAU, anaesthetics, surgery)
- **F2 posts** – derived from A&E SHO posts, GP posts assigned by London Deanery, other posts not required for ST1
- **Academic F2 posts** – developed with NETFS

Background of Foundation Programme Delivery at BLT

- Training Programme Directors (3)
- Educational Supervisors (20)
- Foundation Programme Manager
- Clinical Supervisors (per post)

Trust Organisational Chart for Foundation Programme



Shadowing week

F1 Shadowing week prior to start

Includes:

- Introduction to the foundation programme, use/management of portfolio, assessments, use of e-portfolio, simulation training dates
- Meeting with TPD and ES
- Meeting CS and shadowing F1 (orientation of sites and support services, patient handover)
- Safe prescribing
- ILS update (or ILS for those not certified)
- Clinical Skills
- CRS training
- Occupational health clearance

Induction

F1 Hospital Induction (first Tues in August)

Includes:

- Safe Prescribing
- Radiology department
- Blood transfusion and Pathology
- Death Certification
- Infection Control
- Fire training lecture
- HR
- ID badges

Departmental Inductions every 4 months Aug, Dec, Apr.

Induction

F2 Hospital Induction:

- General Induction (all grades) occurs first Wed in Aug – contents as F1
- On line Induction (completion recorded on training tracker)
- Specific orientation for F2s (August 09) includes information re: career counselling, study leave, portfolio/assessments, simulation training dates, courses (ALS, IMPACT, basic critical care, interview skills, other)
- Departmental Inductions first day / week of job

Educational Supervisors

- Trainees for 12 months
- Initial meeting first 2 weeks in Aug then each rotation, to feedback mini-PAT and additionally as required
- Education agreement signed and PDP for trainee developed at initial meeting
- Sign up at the end of the year

Clinical Supervisors

- Trainees supervised for duration of post (3, 4 or 6 months)
- Assigned mentors in A&E
- Initial meeting first week of post to determine objectives, subsequent meetings mid-point (not all) and at the end of the post to appraise, supervisors report, feedback and sign off for the firm

Core Curriculum Teaching

F1 teaching:

- Weekly bleep free lunchtime sessions at Royal London Hospital (Wed) and Barts (Thurs) 12.30-1.30pm
- Programme developed from Curriculum
- Includes clinical skills (arterial blood gases, suturing, airway rescue, cauterisation)
- Attendance recorded by sign in
- Feedback collected each session
- Career counselling one to one sessions

Core Curriculum Teaching

F2 Generic Skills teaching:

- 10 themed workshops (2-3 hours), each workshop delivered twice to facilitate attendance
- Developed from generic curriculum
- Clinical skills teaching (Central line insertion, Chest Drain, Lumbar Puncture, Knee aspiration)
- Application to specialty training and interview skills workshops, career counselling one to one and workshops
- ALS (and other courses via study leave)
- All F2s required to be involved in at least one audit

The new Royal London Hospital towers

